



OWNER'S MANUAL AND SAFETY INSTRUCTIONS

GEARED / PLAIN TROLLEYS HITCH TR200 HITCH TR201 FROM 1/2 TO 20 TONS

WARRANTY AND SERVICE

The HITCH company provides a warranty for each product that is sold. If one of our tools needs a service or repair, please contact the Hitch Technical Service team by calling **+1 (512) 823-0202**, between 8AM to 5PM CST on Monday through Friday, by e-mail to **service@hitchlifting.com**, or you may contact the nearest HITCH dealer in your region.

Warranty Duration

Assuming that there has been normal use of the product, the HITCH company ensures its compliance with published specifications, and that the product is free from defects in its materials and workmanship during the warranty period specified below. The duration of the limited warranty depends on which country the product was purchased in; these are specified in the «Warranty Duration for hoists HITCH» table, unless otherwise provided by law. The duration of the limited warranty starts from the date of purchase the of specified product on your purchase receipt.

See the «Warranty Duration for hoists HITCH» table.

- Accessories carry a limited warranty of one year from the date of receipt.
- Consumable items — are defined as spare parts or accessories, which are expected to fail after a certain level of use, and which are subject to a 90-day limited warranty against manufacturing defects.

Who is covered?

The warranty covers the initial purchaser of the product from the date of delivery.

What is covered?

The warranty covers any defects in workmanship or materials that are subject to the limitations stated below. This warranty does not cover product failures that have appeared either directly or indirectly due to misuse, neglect, negligence or accidents, normal wear and tear, improper repairs, delays in service or lack thereof.

More Information

HITCH is constantly adding new products to their product lines. For up-to-date product information, please check with your local distributor or visit the HITCH website.

How State Law Applies

This warranty gives you specific legal rights that are subject to applicable state law.

Getting Support

You can contact the Hitch Technical Service by calling **+1 (512) 823-0202** or you may contact the nearest HITCH dealer in your area. Please note that you will be asked to provide proof of your initial purchase when calling. If a product requires further inspection, the technical service representative will assist with any additional action that is required.

Warranty Limitations

HITCH limits every warranty to the duration of the specific warranty for each product. Except as stated in this document, any other possible warranty for the appearance of the product or its performance is excluded. Some administrative and territorial entities do not allow limitations to a warranty, so the above mentioned limitations may not apply in your case. HITCH will not be liable for death, personal injury, damage to property, or for incidental, special or consequential damages arising from the use of our products. Some administrative and territorial entities do not allow for the exclusion or limitation of incidental or consequential damages, so the above mentioned limitations may not apply in your case. HITCH only sells its products through distributors. HITCH specifications in printed materials and on the official HITCH website are given as a general guide and are not binding. HITCH reserves the right to make changes to spare parts, fittings, and accessories at their discretion at any time without prior notification.

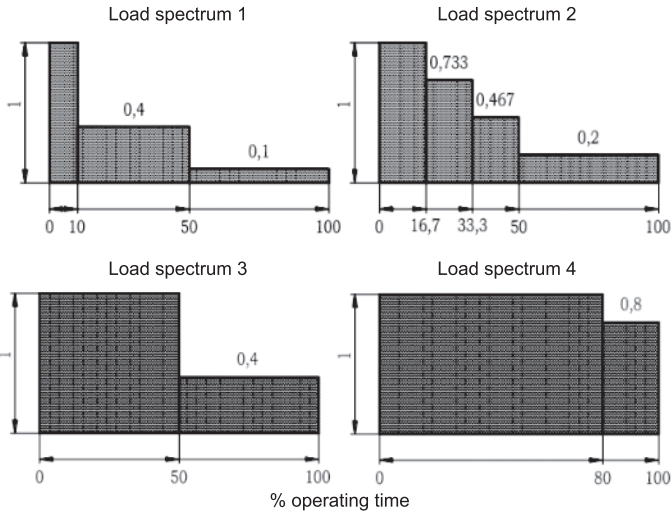
*. The 5 year HITCH Guarantee. (For markets in North, Central, South America, and the EU only).

For all of the professional HITCH equipment in a black color, the warranty duration is extended to 60 months if the owner registers it within 2 (two) weeks from the date of purchase. Registration can be completed by visiting the following address: **www.hitchlifting.com/warranty** A registration card provides confirmation, and this should be printed immediately after the registration process has completed, and kept alongside the original purchase receipt that shows the purchase date of the product.

The registration process will only be complete after the purchaser consents to their personal data being kept on file.

MECHANICAL CLASSIFICATION

The safety and lifespan of the hoisting equipment is guaranteed under the presumption that it works in accordance with the specified classification. All of the products HITCH designs for class M5-M2 correspond to the classification of the M5-M2 mechanism according to ISO 4301/1. The average daily working time is set by the load spectrum.



Mechanism Operation Class

The Mechanism Operation Class is characterized by the assumed total in-service time in hours and nominal classes, presented in Table 1.

For classification, it was agreed to provide a mean value of the total operation time, during which a mechanism is in motion. The total in-service time values should be considered as theoretical. They can not be treated as guaranteed values.

Loading Mode

The Loading Mode determines the relative duration during which a mechanism has incurred the impact of a maximum or decreased load. Nominal loading modes are presented in Table 2. Nominal coefficients of a mechanisms load distribution are set in accordance with Table 2 (the nearest larger value is taken).

Determination of a Mechanism's Classification

Group as a whole

Having determined the Operation Class and the Loading Mode, the Classification Group of the mechanism is determined using Table 3.

Table 1.		
Operation Class	Total Duration of Testing Hours	Notes
To	200	Irregular operation
T1	400	
T2	800	
T3	1 600	
T4	3 200	Regular operation in normal conditions
T5	6 300	Regular operation with interruptions
T6	12 500	Regular intensive operation
T7	25 000	
T8	50 000	
T9	100 000	

Table 2. Nominal coefficients of mechanisms load distribution <i>Km</i>		
Operation Class	Nominal coefficient of load distribution <i>Km</i>	Notes
L1 — light	0,125	Mechanisms regularly affected by light loading and rarely by maximum loading
L2 — moderate	0,25	Mechanisms regularly affected by moderate loading and quite often by maximum loading
L3 — heavy	0,50	Mechanisms regularly affected by heavy loading and often by maximum loading
L4 — severe	1,00	Mechanisms regularly affected by maximum loading

Table 3. Mechanism Classification Group as a Whole		
Loading Mode	Nominal coefficient of load distribution <i>Km</i>	Mechanisms Operation Class
		To T1 T2 T3 T4 T5 T6 T7 T8 T9
L1 — light	0,125	M1 M2 M3 M4 M5 M6 M7 M8
L2 — moderate	0,25	M1 M2 M3 M4 M5 M6 M7 M8
L3 — heavy	0,50	M1 M2 M3 M4 M5 M6 M7 M8
L4 — severe	1,00	M2 M3 M4 M5 M6 M7 M8

PRODUCT FEATURES

Hitch Geared / Plain Trolley series TR200 / TR201 are available with modifications in their load capacity from ½ tons to 20 tons. The trolleys are constructed with heavy gauge steel for an increased strength. Big steel wheels and thicker bearings provide reliable and smooth movement in various directions. A bumper built into the body of the trolley increases the operator's safety, and prolongs the operation period of the trolley.

Each Hitch Geared / Plain Trolley conforms to the rules of OSHA and ANSI / ASME standards.

Strength

Welded steel of a thick-sheet construction with a high-quality powder coating provides the maximum service life of the trolley. The heat treated thick steel wheels with double seal lubricated precision ball-bearings ensure that there is always a reliable and smooth movement.

The anti-derailment — buffer end plates are easily adjustable to wide-flange H-beams, standard I-beams, or curved tracks with the included spacer washers.

Certification: test load of 150% carrying capacity with the certificate.

Standards: Hitch Geared / Plain Trolleys comply with the mechanical class M4 (which corresponds to the classification mechanism M4 - ISO 4301/1)

Hitch Geared / Plain Trolleys conform with OSHA Regulations, ANSI / ASME B30.11 and B30.17

MAINTENANCE

Inspection

Monthly: Inspect the suspension plate, track wheel, and locking nuts.

Locking Nuts

Be sure that the locking nuts are secure. Operators should visually inspect trolleys on a regular basis. Observe for wear, damage, cuts, cracks, or corrosion. If any problems are observed, the trolley should be placed out of service until it can be repaired. Only use Hitclifting Inc. products for replacement parts. The trolleys should be taken to an authorized repair center for a professional inspection once a year.

IMPORTANT INFORMATION AND PRECAUTIONS

This manual contains general instructions that deal with the normal installation, operation and maintenance of the products described herein.

This product should not be installed, operated, or maintained by any person who has not read all of these instructions. Failure to read and comply with these instructions, warnings, or limitations, might result in bodily injury, death, or property damage. Contact the distributor for more information if this is not fully understood.

It is the responsibility of the owner/user to install, test, maintain, and operate these products in accordance with OSHA regulations, other federal, state, and local regulations, and ANSI standards. Only trained and qualified personnel should operate and maintain this equipment.

Maintain Records

Schedule and maintain records of regular inspections to ensure the maintenance of the product in compliance with ANSI standards.

Record your trolley's serial number (on the front cover of this manual) to allow for easier referencing.

Precautions

Do not use Hitclifting Inc. products in conjunction with other equipment unless the system designer, manufacturer, installer, or user has put the necessary safety devices in place.

Modifications to upgrade or alter these products should only be authorized by the original manufacturer. These trolleys should be used for holding loads only within their load ratings.

WARNINGS

- Always** follow installation instructions.
- Always** wear protection equipment such as protection goggles, gloves, and helmet.
- Always** let qualified service personnel inspect the trolley periodically.
- Always** oil the trolley regularly.
- Always** storing the trolley in a dry place.
- Never** install a trolley on damaged or deformed beams.
- Never** operate if its locking nuts are not tight and locked in position.
- Never** operate if its space washers are not correctly spaced.
- Never** operate if its end stops are defective and don't restrain the trolley.
- Never** swing a suspended load.
- Never** subject a trolley to a side pull or load.
- Never** weld or cut a load suspended by the trolley.
- Never** leave a suspended load unattended.
- Never** throw a trolley.

OPERATION

Warnings & Precautions

Trolley operators should read and fully comprehend this entire manual and all of the warnings about the hoist before beginning hoist operation. If this manual is not read and followed completely injuries may occur.

Operation

Be aware of your trolley load capacity and don't overload it. Attach a load to the suspension plate directly under the trolley.

Prior to operation, be sure that the trolley is in a proper working condition and that its maintenance records are up to date.

Operator Requirements

An operator must be trained in the proper use of the trolley, including how to deal with potential malfunctions. Nobody should operate a trolley while under the influence of alcohol, medications, or drugs. Trolleys should not be used while tired or distracted. An operator should not have a history of seizures or other medical issues that may interfere with their operation. They should also have proper coordination and vision.

PRE-INSTALLATION

Before a trolley's initial operation, please read and comply with all of the instructions and warnings that come with or attached to the product (if applicable).

Check for damage during its shipment. Do not install or use a damaged product. Contact a Hitclifting Inc. dealer if there are any problems.

Installation instructions

For every model, to 20 Ton TR100-101, TR 200-201 type. Measure the flange width of the beam. Evenly distribute the two spacer sleeves and spacer washers on both sides of the load bar so that they are equal to the beam flange width plus 4mm. The clearance (x) between the trolley wheel flange and the beam edge must be 2mm on each side when finally assembled. For curvature beams the clearance (x) must be increased adequately, see Figure 1.

Assemble the remaining washers outside of the trolley's side plate and fit the nuts to the hanger pin. **There must always be at least one washer on the inside and the outside of each of a trolley's side plates.**

Secure both of the side plates and fix both of the hex nuts tightly. Check the operation of the trolley by rolling it along the beam with a load.

Slacken off the hanger pin nuts & spread the side plates so that the wheels can be slipped up over the beam. Screw the nuts firmly against the washers, then suspend a light load from the trolley to ensure that all four of the wheels make contact with the beam. Screw the nuts tightly against the washers, and then secure with lockouts.

The nuts must be tight. A geared trolley, when assembled at the minimum beam width, will require its hanger pin to be offset, so it will not damage the Handwheel.

SAFETY INSTRUCTIONS

- Always** make sure that there are no objects in the way of a moving load.
- Always** let people around you know when the transportation of a load is about to begin.
- Never** use a hoist with a capacity greater than the capacity of the trolley.
- Never** use a trolley if the width does not fit the rail.
- Never** connect the hoist to the trolley with improper fittings.
- Never** crash a trolley into the stopper intentionally.
- Never** operate unless the load is centered under the trolley and the hoist.
- Never** remove or obscure the warning tags.
- Never** lift more than the trolley's rated load.
- Never** lift or transport loads over or near people.
- Never** use a trolley for lifting, supporting, or transporting people.
- Never** operate a trolley if damaged or malfunctioning.
- Never** install a trolley on beams of an unknown capacity.

Handling the load

Align the trolley's hoist directly over the load, avoid any side pull or any action that would cause the trolley's wheels to lift off one side of the beam.

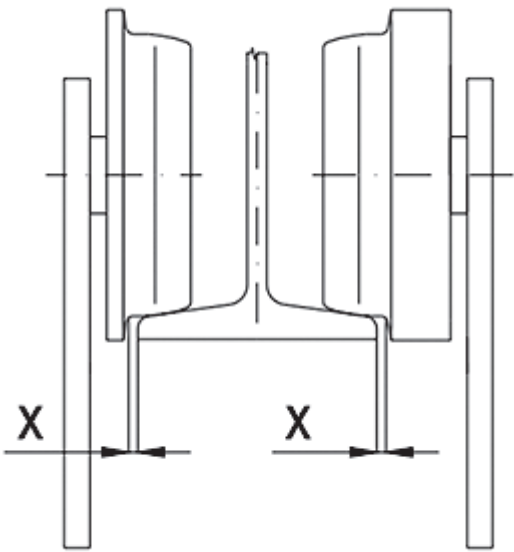
Bring the hoist hook into engagement with the load and make sure it is well seated before proceeding to move the load.

Proceed to lift the load to the height necessary to clear any objects over which the load must pass.

Do not let the load swing excessively while moving the trolley. Let the trolley coast to a stop instead.

Do not run the trolley into beam end stops of other trolleys on the beam.

Figure 1.



HITCHLIFTING.COM, T: +1 512 823 02 02

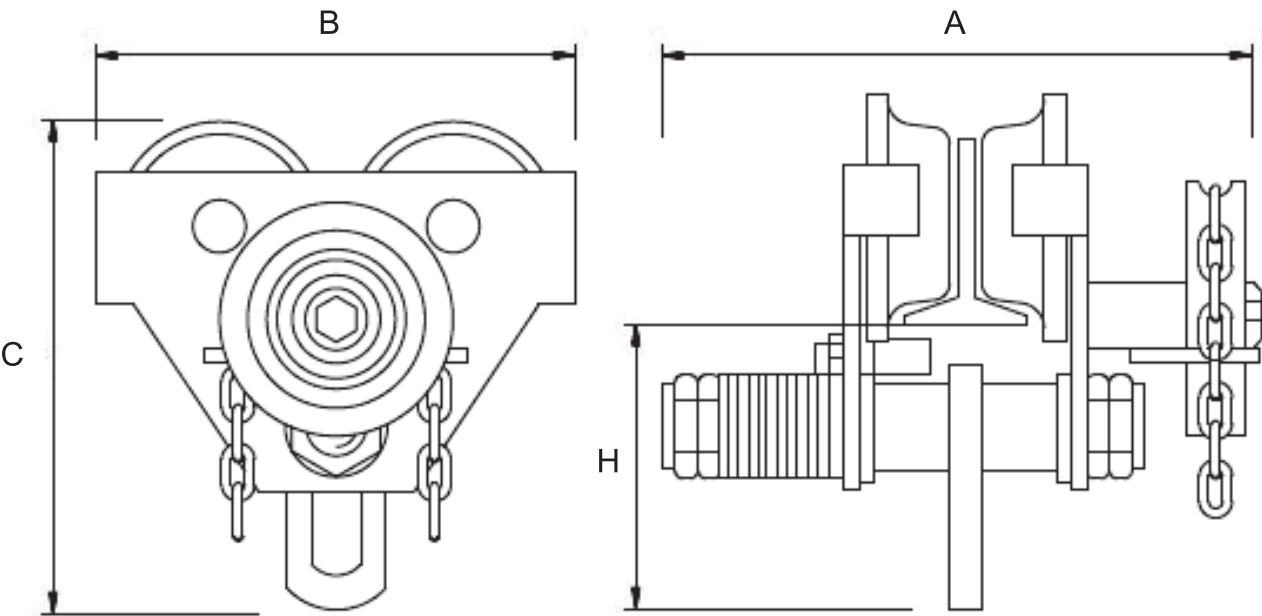
MFD FOR: HITCHLIFTING INC., 211 E. 7TH STREET,
SUITE 620, AUSTIN, TX, 78701-3218, USA

MFD BY: HITCHLIFTING CO., LTD. 7TH BUILDING, SHANGDING
INDUSTRY PARK, NO.22 HONGHU WEST ROAD, NEW NORTH
DISTRICT, CHONGQING, CHINA

HITCH IS A REGISTERED TRADEMARK OF HITCHLIFTING INC.

GEARED TROLLEY HITCH
TR200

Technical Information



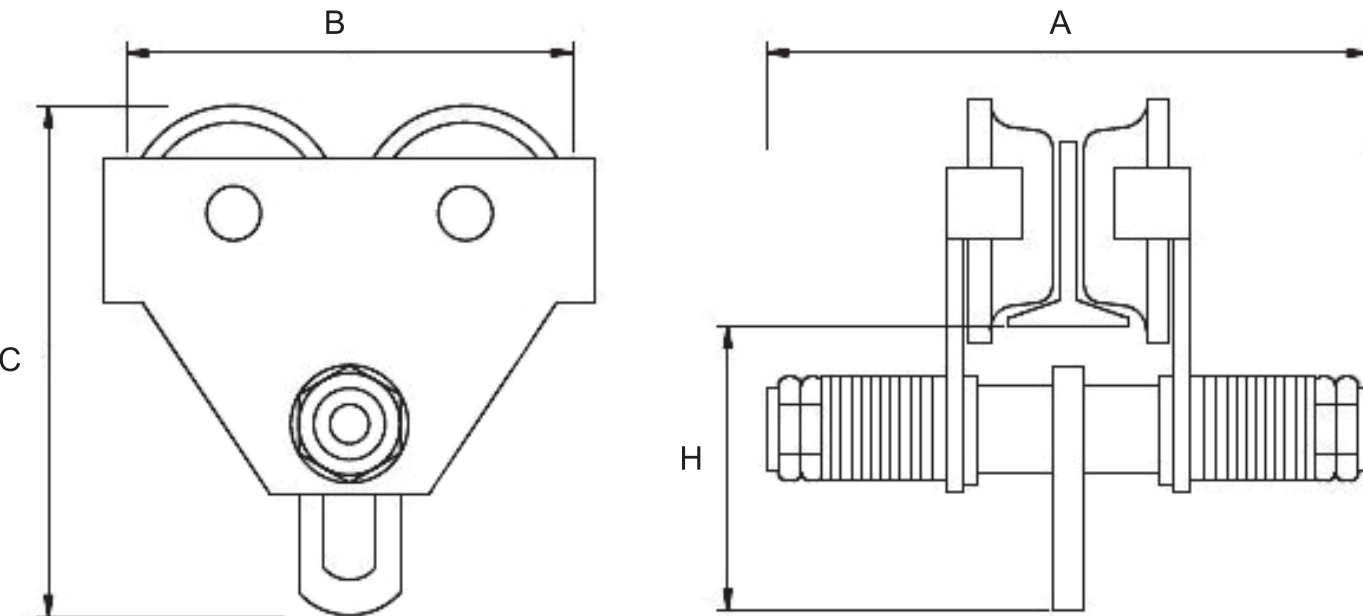
Specification

STOCK NUMBER *		141 053	141 013	141 023	141 033	141 503	141 103	141 203
RATED CAPACITY [TONS]		1/2 TON	1 TON	2 TON	3 TON	5 TON	10 TON	20 TON
TEST LOAD [TONS]		3/4	1-1/2	3	4-1/2	6-1/4	12-1/2	25
STANDARD LIFT [FT.] **		10	10	10	10	10	10	10
BEAM FLANGE WIDTH I [IN.]		2-1/2—8	2-1/2—8	3—7/16	4—8	4-1/2—8	4-11/12—8	4-11/12—8
MINIMUM RADIUS CURVE [IN.]		39-1/4	39-1/4	51-3/16	59-1/16	63	66-7/8	177-1/8
TRAVEL SPEED [FT/MIN] ***		16	16	7	7	6	N/A	N/A
MECHANICAL CLASS		M4						
OPERATION TEMPERATURE [F] ****		-40 F UP TO +150 F						
DIMENSIONS [IN.]	A	14-7/16	14-15/16	15-3/16	16-1/4	17-1/16	16-1/8	18-11/16
	B	8-3/8	9-7/16	10-5/8	12-5/8	13-3/4	16-5/16	31-7/16
	C	7-7/16	8-3/8	10-1/4	12-1/2	15-1/16	18-1/8	22-5/8
	H	4-7/16	4-7/8	6-1/16	7-5/16	9-1/8	9-5/16	11-13/16
NET WEIGHT [LBS]		21	29	43	63	98	198	474

* Stock Number is indicated for standard design and standart lift. For more detail see www.hitchlifting.com.
** Maximum standard lift is 60 Ft. Specify your required lifting height in your order.
*** Calculated on the presumption of winding 100 Ft. of the hand chain per minute.
**** It is necessary to check the brake hoists at a temperature below 32° F to prevent freezing.
Operation humidity - 100%

PLAIN TROLLEY HITCH
TR201

Technical Information



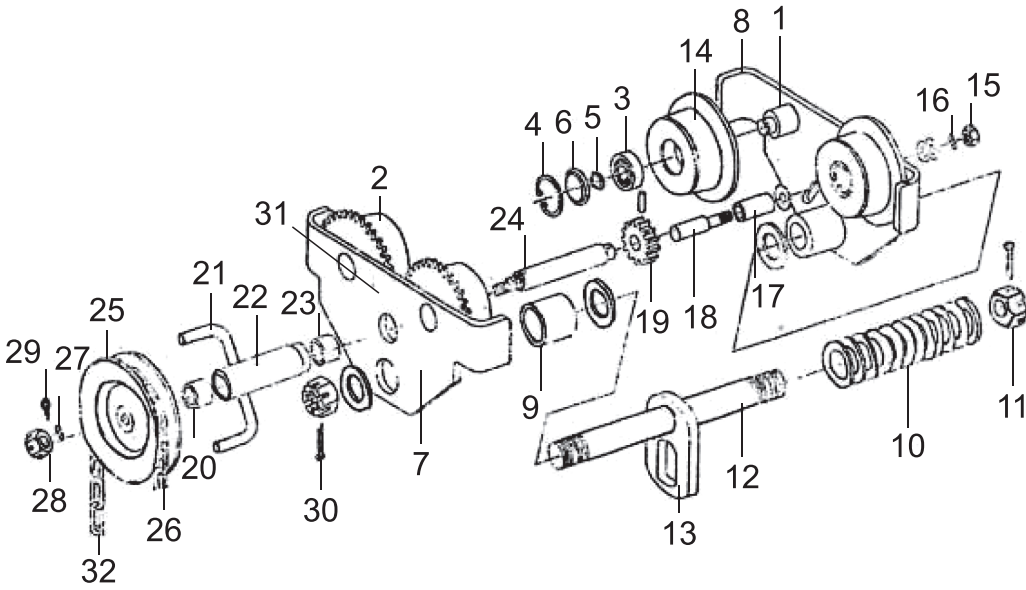
Specification

STOCK NUMBER *		142 050	142 010	142 020	142 030	142 500	142 100	142 200
RATED CAPACITY [TONS]		1/2 TON	1 TON	2 TON	3 TON	5 TON	10 TON	20 TON
TEST LOAD [TONS]		3/4	1-1/2	3	4-1/2	6-1/4	12-1/2	25
BEAM FLANGE WIDTH I [IN.]		2-1/2—8	2-1/2—8	3—7/16	4—8	4-1/2—8	4-11/12—8	4-11/12—8
MINIMUM RADIUS CURVE [IN.]		39-1/4	39-1/4	51-3/16	59-1/16	63	66-7/8	177-1/8
MECHANICAL CLASS		M4						
OPERATION TEMPERATURE [F] ****		-40 F UP TO +150 F						
DIMENSIONS [IN.]	A	12-3/16	12-11/16	13-3/16	13-3/4	14-3/4	13-1/2	18-11/16
	B	8-3/8	9-7/16	10-5/8	12-5/8	13-3/4	16-5/16	25-3/8
	C	7-7/16	8-3/8	10-1/4	12-1/2	15-1/16	18-1/8	24-1/2
	H	4-7/16	4-7/8	6-1/16	7-5/16	9-1/8	9-5/16	12-3/8
NET WEIGHT [LBS]		13	21	35	54	89	183	518

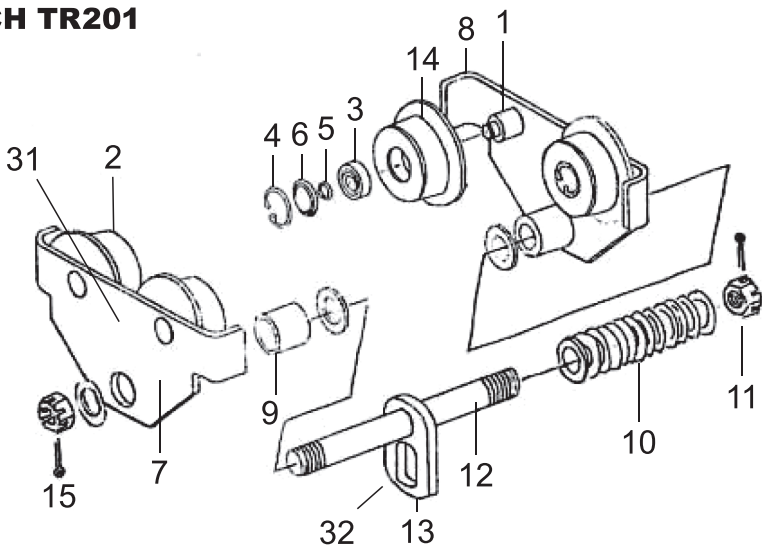
The specifications in this instruction manual were relevant at the current time of publication, but because of our policy of continuous improvement, Hitchlifting Inc. reserves the right to change the specifications at any time and without any prior notice, without incurring any obligations.

1/2 THRU 20 TON
CAPACITY TROLLEY
PARTS LIST

Geared Trolley HITCH TR200



Plain Trolley HITCH TR201



ITEM NO	ITEM DESCRIPTION	ITEM NO	ITEM DESCRIPTION
1.	AXLE	18.	PIN
2.	GEAR WHEEL	19.	PINION
3.	BEARING	20.	SPACER
4.	RET CLIP	21.	CHAIN GUIDE
5.	CIR CLIP	22.	BUSHING
6.	SPACER	23.	BUSHING
7.	RIGHT SIDE PLATE	24.	PINION GEAR
8.	LEFT SIDE PLATE	25.	HAND WHEEL
9.	SPACER	26.	HAND CHAIN
10.	SPACER WASHER	27.	WASHER
11.	NUT	28.	NUT M12
12.	LOAD BAR	29.	COTTER PIN
13.	SUSPENDER PLATE	30.	COTTER PIN
14.	PLAIN WHEEL	31.	WARNING LABEL [NOT SHOWN]
15.	NUT M12	32.	PENDANT WARNING TAG [NOT SHOWN]
16.	SPRING WASHER		
17.	SPACER		

Warranty Duration for hoists HITCH

SERIES	MODELS MANUAL HOIST AND TROLLEY HITCH	WARRANTY DURATION	REGION
PROFESSIONAL	HAND CHAIN HOIST HITCH - CH200, CH200-G, CH200-GS, CH200-GSB, CH360, CH202"STORM", CH203 MC 6, CHM204 MCBMINI, CH205 LARGE-TONNAGE LEVER HOIST HITCH - LH200, LH200-G, LH201, LH201G, LH201GS, LH202 MCL6-S, LH203 COMPACT, LHM204 MINI PROFF TROLLEY GEARED HITCH TR200, TR201, BC202 WJ	5* YEARS	NORTH, SOUTH, CENTRAL AMERICA
		5* YEARS	EU
		3 YEARS	MIDDLE EAST, AFRICA
		3 YEARS	ASIAN-PACIFIC AREA
		3 YEARS	RUSSIA, THE CUSTOMS UNION
REGULAR	HAND CHAIN HOIST HITCH - CH100, CH100-G, CHM104 MINI TYPE, CH101 , CH102 TD, CH105 LEVER HOIST HITCH - LHM104 MINI TYPE, LH100 TROLLEY GEARED HITCH TRI00, TRI01, BC102	2 YEARS	NORTH, SOUTH, CENTRAL AMERICA
		2 YEARS	EU
		2 YEARS	MIDDLE EAST, AFRICA
		2 YEARS	ASIAN-PACIFIC AREA
		2 YEARS	RUSSIA, THE CUSTOMS UNION